

**BALAJI
GOVIND**
INTELLIGENT LIVING SPACES



DREAM HOMES @ A DREAM PRICE



S. S. Life Spaces which is a group of construction companies developing residential apartments & commercial spaces.

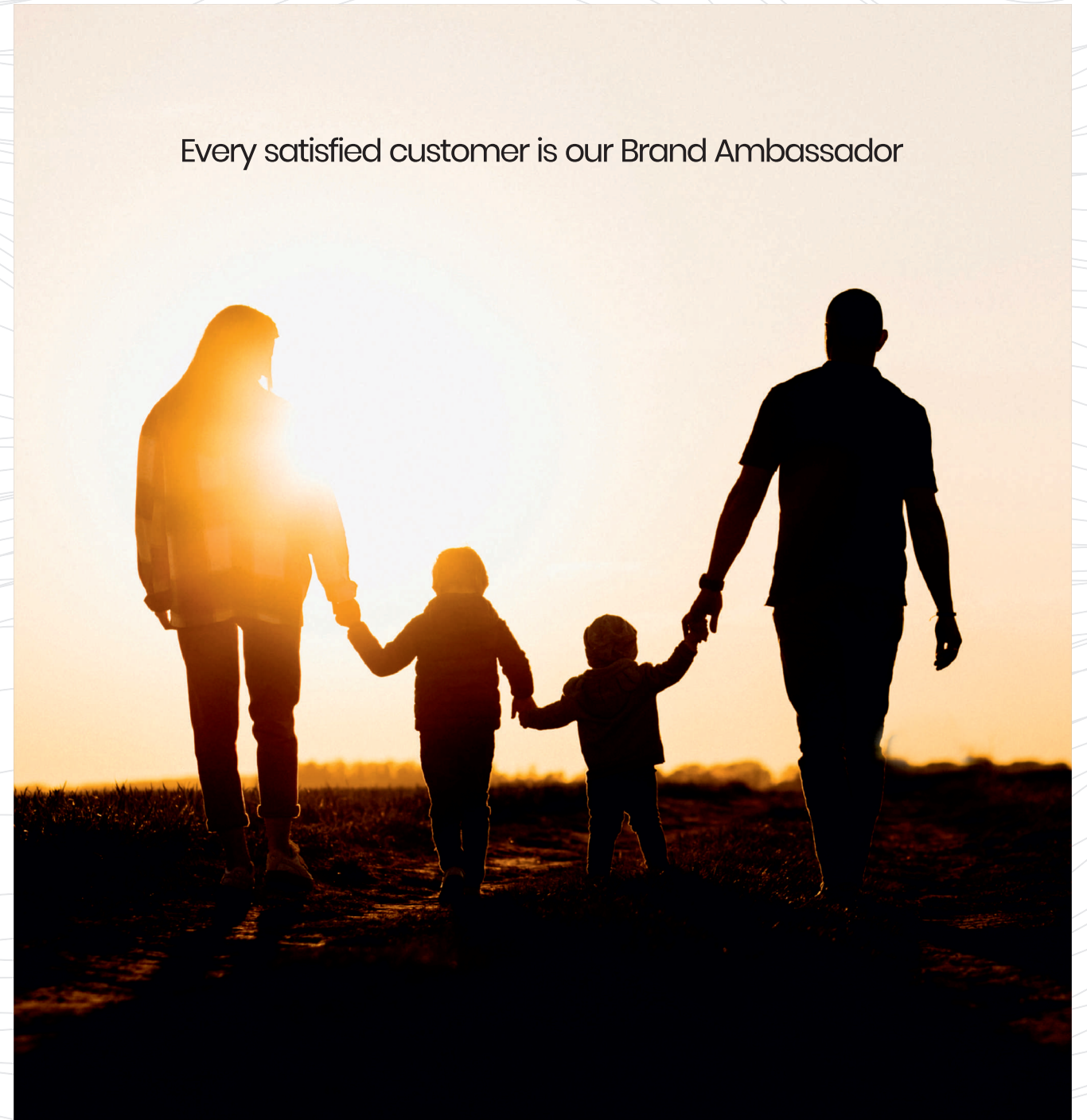
It has completed & on going projects in Kharghar, Navi Mumbai, Dombivali, Kalyan & Thakurli in Central Mumbai Surburbs. The group is proud of it's journey, spread over around 25 years. From a "Stand Alone" building in 1998 to now Residential Complexes with multiple buildings, it has been a quite enriching experience.

Today the group is developing multiple projects with all the modern lifestyle facilities like Recreational Gardens, Health club, Gymnasium and Swimming Pool.

The group has successfully completed over 30 residential projects and delivered more than 2000 apartments till date. The group has progressed leaps & bound in these 25 years, purely on the basis of its remarkable goodwill with its customers and construction associates. Every satisfied customer is our brand ambassador.

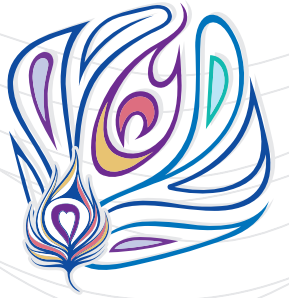


Artistic Representation



Artistic Representation

Every satisfied customer is our Brand Ambassador



**BALAJI
GOVIND**
INTELLIGENT LIVING SPACES

YOUR HOMES... CLOSER TO EVERY CONVENIENCE

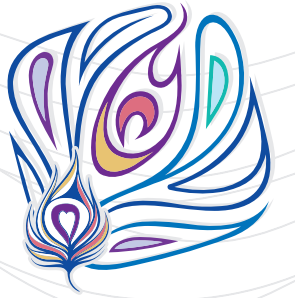
Come and Experience, where every pleasure of life is just a short distance away. Everything you need, is close to you.

Balaji Govind's towering presence just 3 minutes from the railway station will signify for its residents, the perfect synergy of comfort with connectivity.

Its uniqueness lies in the belt's interesting convenience triangle that brings corporates, working professionals and retail within striking distance of each other creating in the process, a self-sustaining environment of growth.

🏫 Model College	-	2 minutes walkable
🚉 Thakurli Station	-	3 minutes drive
🎓 Omkar International School	-	3 minutes drive
🚉 Dombivili & Kalyan Station	-	5 minutes drive
🛍 Metro Mall	-	5 minute drive
🏥 Aims Hospital	-	5 minute drive
🏋 KDMC Gymkhana	-	5 minute drive
🏦 Banks (SBI, Axis, ICICI)	-	5 minute drive
🛒 Convenience of Shopping	-	Within the Project





SMART LIFESTYLE WITH INTELLIGENT SPACE DESIGNS

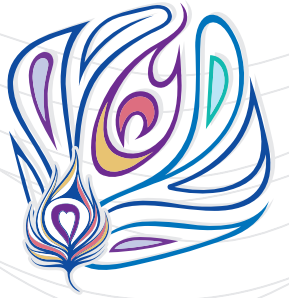
- We have designed Smart 1BHK with separate master toilets & common toilets for absolute comfort of your family.
- Our 2BHK's are planned to accommodate your family members with every modern Amenity & Luxury required for a Happy Living.
- Air Conditioned Fitness Center on Rooftop.

It goes without saying that the era of Smart Residential infrastructure has arrived that offer the synergy of design, detail, warmth and wellness under one roof.

Welcome Home.

SMART & INTELLIGENT SPACES





VALUE ADDITIONS ARE THE KEY – AMENITIES

At Balaji Govind Real value comes inbuilt in every square feet of space, be it indoors or outdoors. Don't just take our word for it. Experience the feeling of 'Sheer Pride' through our enviable range of world class amenities. Its yours for a lifetime. A Balaji Govind home is about Luxury to the power of Positive energy, productivity, health and a heighten sense of well-being. No wonder, it will appreciate and be appreciated at the same time.

Safety of your loved ones are of prime importance hence we provide three tire security arrangement & Secure Lifestyle.

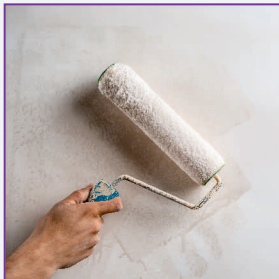
FITTINGS & FIXTURES



GRAND
ENTRANCE LOBBY



ROOFTOP
FITNESS CENTER



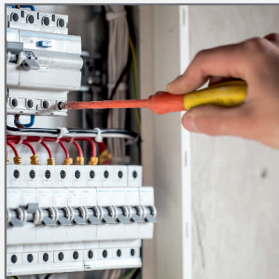
BEST QUALITY
PAINTS



CCTV
SURVEILLANCE



WORLD CLASS
ELEVATORS



CONCEALED
ELECTRICAL WIRING
AND QUALITY FITTINGS



FIREFIGHTING
EQUIPMENTS



COMMON
SOCIETY OFFICE

DESIGNER LAMINATED MAIN DOORS, BEDROOM & BATHROOM DOORS

DESIGNER FALSE CEILING IN LIVING ROOMS AND BEDROOMS

ADEQUATE ELECTRIC POINTS FOR AC, TV, LIGHTS, FANS, REFRIGERATORS

POINTS FOR GEYSERS & WATER PURIFIERS

BEST QUALITY VITRIFIED FLOORING

HEAVY DUTY ANODIZED ALUMINIUM WINDOWS

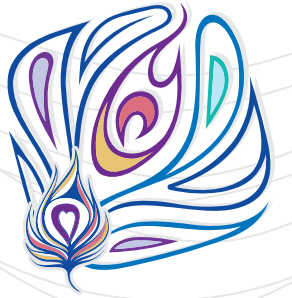
SOLAR WATER HEATING SYSTEM

WEATHER RESISTANT ACRYLIC PAINTS ON EXTERNAL WALLS

POWER BACK UP FOR COMMON AREA

CCTV

VIDEO DOOR PHONES



THE DYNAMISM OF INTELLIGENT SPACES

FLOOR PLANS

Intelligent spaces go beyond the physical to address even the psychological and social aspects of residential lifestyles. The 'feel good' and 'Rise' factor are key objectives in our design initiative geared towards achieving the perfect life, style, play and work balance for families looking to realise their smart Indian dream of a Happy Home with a Happy Family.

ISOMETRIC PLANS

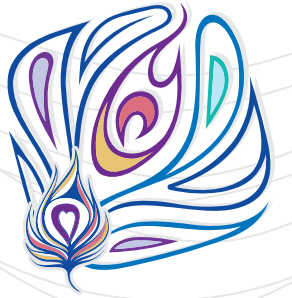
1 BHK ISOMETRIC PLAN



2 BHK ISOMETRIC PLAN







OUR PROJECTS



BALAJI AANGAN COMPLEX
- Thakurli (E)
Completed



BALAJI RESIDENCY
- Thakurli (E)
Completed



TRILOK HEIGHTS
- Thakurli (E)
Completed



DREAM HEIGHTS
- Kharghar
Completed



**BALAJI SIDDHIVINAYAK
COMPLEX** - Dombivali (W)
Ongoing



BALAJI EMERALD
- Thakurli (E)
Ongoing

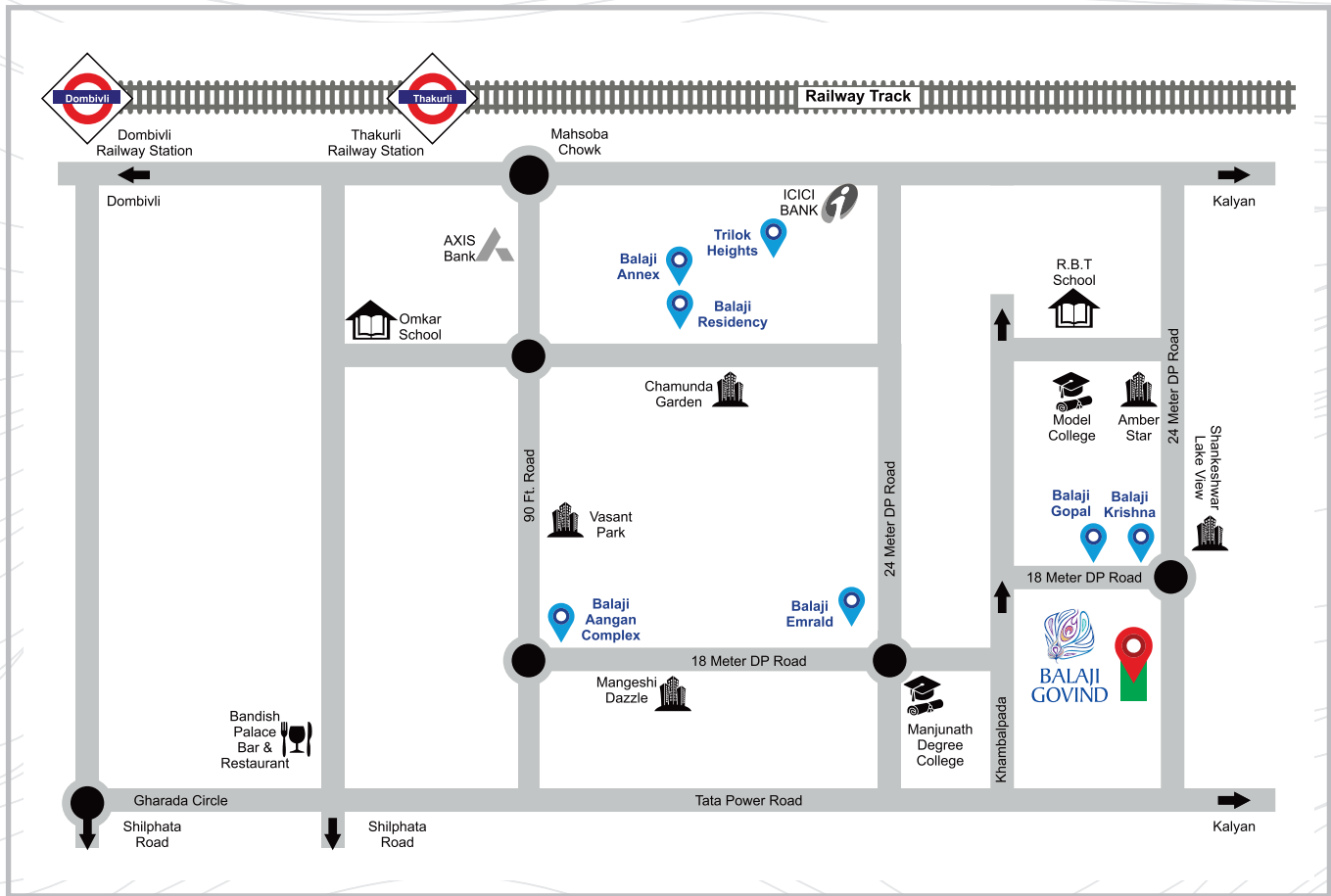


BALAJI ANNEX
Thakurli (E)
Ongoing



BALAJI EMERALD
Thakurli (E)
Ongoing





Office Address :

Shop no. 5,6,7, Padmavati building,
Balaji Emerald, Behind Aangan Complex,
Thakurli (E), 421201.

Office Contact No. :

0251 2971937 / 47 / 57

Sales Contact No. :

+91 7738720565

Website : www.sslifespaces.in

Architect : Sthaptya Nirman

RCC Consultant : Shanti Consultant



MAHARERA Registration No.:
P51700032267
URL - www.maharera.mahonline.gov.in