

A Project By
ABCDEF BUILDERS

Manpada Road, Sagaon, Dombivli East, Maharashtra - 421203
CONTACT : 00000 00000, 00000 00000
EMAIL : lorem@27east.com | WEBSITE : www.27east.com
ARCHITECT :
RCC CONSULTANTS :



MahaRERA Registration No.:
P51700028466
URL - www.maharera.mahaonline.gov.in

NOTE / DISCLAIMER
The information herein i.e., specifications, designs, dimensions etc. are subject to change without notification as may be required by the relevant authorities or the developer's, architect and cannot form part of an offer or contract, whilst every care is taken in providing this information, The owner, developer and manager cannot be held liable for variation. All illustrations & pictures are artist's impressions only. The items specified are subject to variations, modifications & substitution as may be recommended by the company's, architects / or relevant approving authorities.

27. EAST

DOMBIVLI EAST

27. EAST

DOMBIVLI EAST

WELCOME TO
27 EAST.
RISE TO YOUR NEXT LEVEL.

When luxury meets exclusivity, the experience is unique and magical. And 27 East aims to bring this magic to you. Not just to your doorstep, but into your very homes. With this architectural marvel, 27 East gives you seamless space within which you can plan your dream home just the way you like. And an exclusive view from your apartment is a dream come true to every home buyers.



27. EAST

DOMBIVLI EAST

PRESENTING 27 EAST... LIFE'S FINEST LIVING

The most prestigious place in Dombivli is now the site that cradles 'Life's Finest Living'. 27 East is a symbol of success, wealth and achievement. This is where comfort, luxury, convenience and aesthetics come together to create a home that makes a luxury lifestyle statement.

Spread across a huge area, towering to 26 stories, 27 East is fit for royalty. What's more, this luxurious space is located such that you're never far from the places that matter. From luxury hotels to fine dining restaurants, educational institutes to hospitals, 27 East truly is a coveted address.

- Earthquake Resistant RCC Structure
- All Weather Eco-Friendly Paints
- Good Quality Security System
- Designer Entrance Lobby and Compound wall
- Refuge and Fire Escape Areas
- Rain water harvesting system
- Hi-Speed Elevators with Auto Rescue
- Generator Backup for common areas
- Solar Water Heating System



27. EAST

DOMBIVLI EAST

PERFECT BLEND OF CONTEMPORARY DESIGN AND URBAN STYLISHNESS

FLOORING

- 24"X24" Vitrified Flooring in all rooms

KITCHEN

- Granite Kitchen platform with S.S. Sink
- 2' Height Dado Tiles above Kitchen Platform
- Provision for water purifier point

DOORS & WINDOWS

- Decorative Laminated doors
- with wooden frame
- Full size window with Anodizing or Powder coating
- Granite or Composite window sill

BATH AND WC

- 24"X24" Designer glazed tiles upto beam level
- Anti skid designer flooring
- Concealed Plumbing
- Branded sanitary wares of reputed make
- Premium Quality C.P. Fitting of reputed make
- Provision for Exhaust Fan & Geyser point

WALLS AND PAINTS

- Putty finished internal Walls
- Good quality paints for internal walls

ELECTRIFICATION

- Adequate Concealed Electrical points with Copper wiring for rooms
- Telephone, A.C. & Cable T.V. Points in Living Room and Master Bed
- Each flat with E.L.C.B. / M.C.B. for Electrical safety

WATER TANK

- Underground & Overhead water
- Tank with adequate storage capacity
- Rainwater harvesting system

SECURITY

- Branded Lifts
- Video security systems at the lobby
- Intercom connection
- Power back up for lifts, water pump, lighting and common areas
- Basic Firefighting Systems



27. EAST

DOMBIVLI EAST

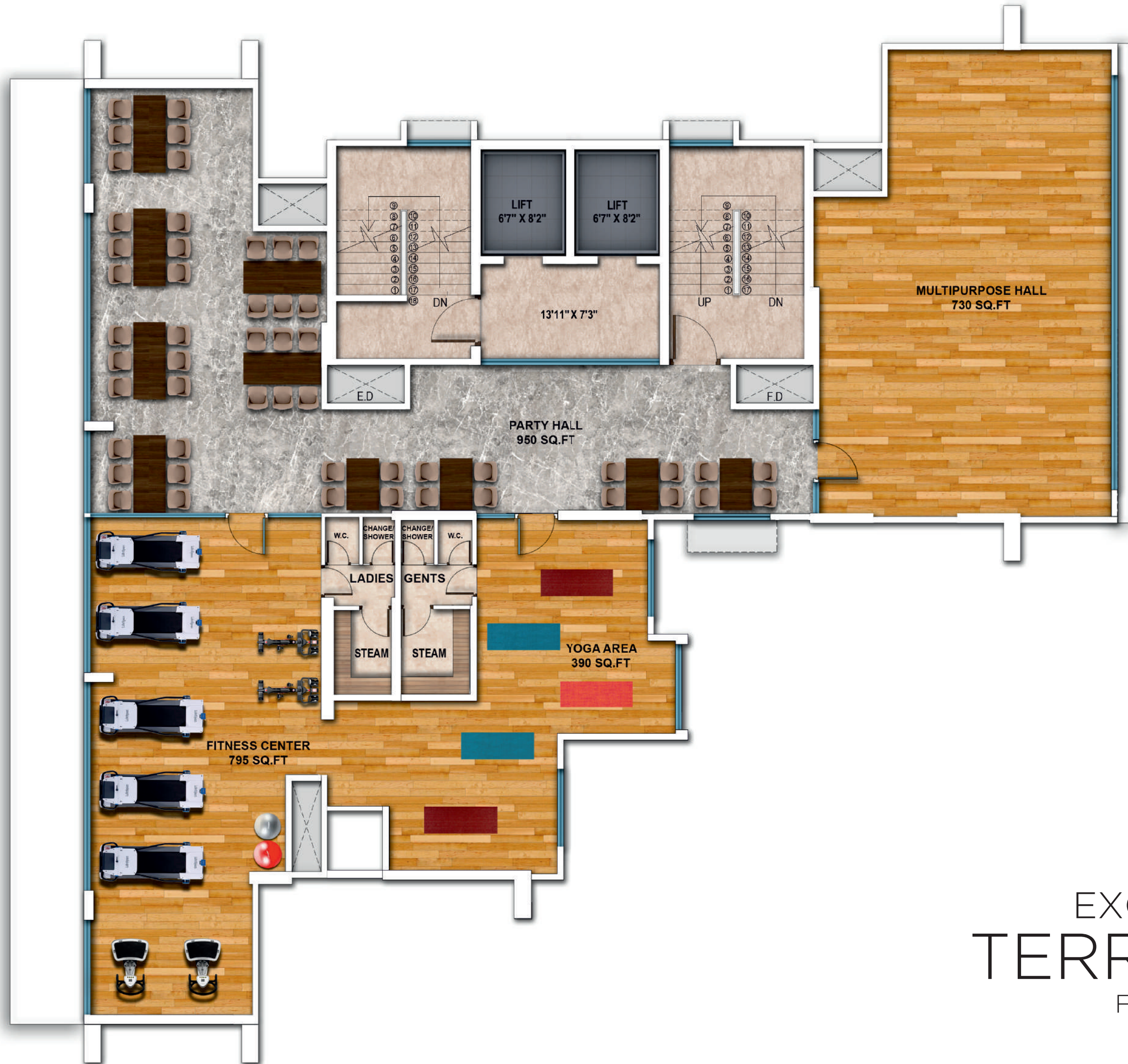
SWIMMING POOL :
REFRESH YOUR
MIND AND SOUL



EXCLUSIVE
GANESHA TEMPLE :
DISCOVER YOUR OWN
PLACE TO PRAY

CHILDREN'S PLAY
AREA : KID'S SPECIAL
ARENA TO ENJOY
THOSE EVENINGS





EXCLUSIVE
TERRACE
FLOOR PLAN

27. EAST

DOMBIVLI EAST

EXCLUSIVE ROOFTOP SKY LOUNGE AND SITTING AREA



ROOFTOP WELL-EQUIPPED GYMNASIUM



ROOFTOP YOGA AND MEDITATION AREA

ROOFTOP GREEN GARDEN AND PARTY LAWN

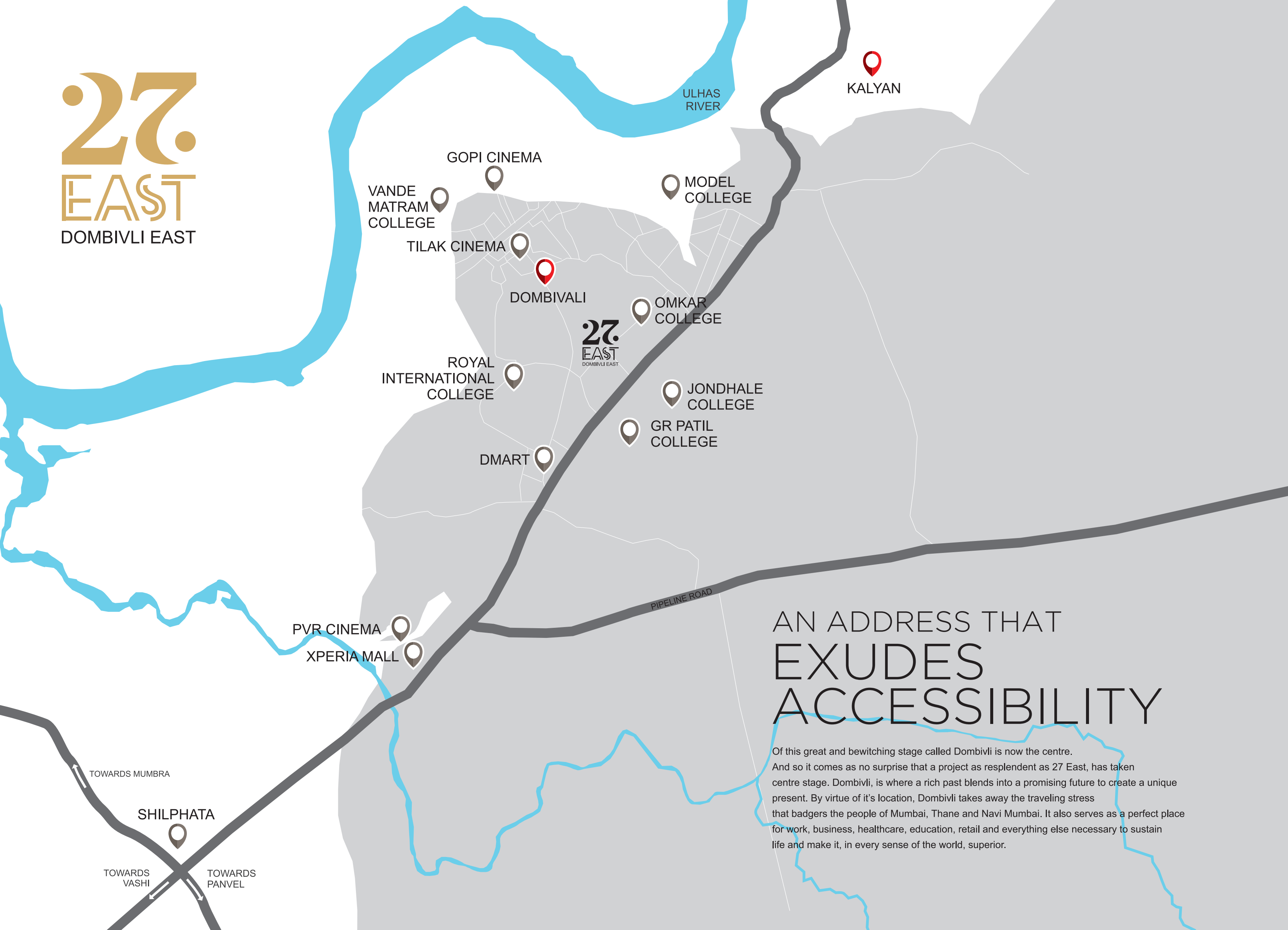


ROOFTOP ENTERTAINMENT ZONE AND AMPHITHEATRE



27. EAST

DOMBIVLI EAST



KALYAN

ULHAS
RIVER

GOPI CINEMA

VANDE
MATRAM
COLLEGE

MODEL
COLLEGE

TILAK CINEMA

DOMBIVALI

27.
EAST
DOMBIVLI EAST

OMKAR
COLLEGE

ROYAL
INTERNATIONAL
COLLEGE

JONDHALE
COLLEGE

GR PATIL
COLLEGE

DMART

PIPELINE ROAD

PVR CINEMA

XPERIA MALL

AN ADDRESS THAT EXUDES ACCESSIBILITY

Of this great and bewitching stage called Dombivli is now the centre. And so it comes as no surprise that a project as resplendent as 27 East, has taken centre stage. Dombivli, is where a rich past blends into a promising future to create a unique present. By virtue of it's location, Dombivli takes away the traveling stress that badgers the people of Mumbai, Thane and Navi Mumbai. It also serves as a perfect place for work, business, healthcare, education, retail and everything else necessary to sustain life and make it, in every sense of the world, superior.

TOWARDS MUMBRA

SHILPHATA

TOWARDS
VASHI

TOWARDS
PANVEL

27. EAST

DOMBIVLI EAST

THE LOCATION ADVANTAGES AND DISTANCES



Xperia Mall : 6.8 km
Empress Mall : 700 m
Commerce Plaza : 1 km



G.R Patil College : 1.2 km
Model College : 2.2 km
Jondhale College : 1.9 km
Vande Mataram : 4.9 km
Royal Intl. School : 1.2 km
Omkar School : 1.2 km



Tilak Multiplex : 1.8 km
Gopi Multiplex : 3.6 km
PVR Multiplex : 6.8 km



Icon Hospital : 500 m
Local Market : 100 m
Dmart : 1.3 km
Dombivali Station - 1.8 km





2 BHK
TYPE 04 - C1

2 BHK
TYPE 03 - 1

1 BHK
TYPE 02 - A

2 BHK
TYPE 01 - A

2 BHK
TYPE 01 - B

TYPICAL
EVEN FLOOR
2ND, 4TH, 6TH, 10TH &
14TH FLOOR PLAN

2 BHK
TYPE 04 - B

2 BHK
TYPE 03 - B

1 BHK
TYPE 02 - B

